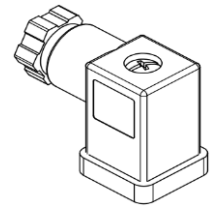
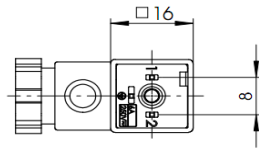


Connector, form C, analogue with EN 175301-803 (ISO 15217)

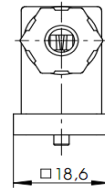
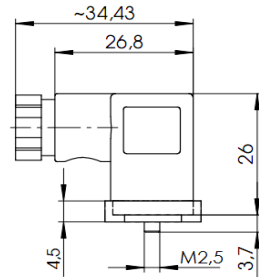
Housing

Type	one-piece
Color	black
Material	PA6 GF30
Imprint	n/a



Cable gland

Thread	M12 x 1,5 mm
Cable diameter	4-6 mm
Color	black
Material	PA6 GF30
Tightening torque	1,6 ± 0,2 Nm



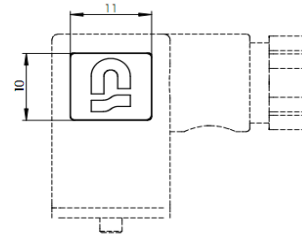
Terminal block

Material	PA6.6
Poles	2 + PE
Direction of protecting earth	6 h
Contact distance	8 mm

Contacts

Material	CuZn, tin-plated
Resistance	< 15 mOhm
Conductor cross-section	0,34 - 0,5 mm ²
Tightening torque	0,2 + 0,1 Nm
Wire protection	n/a

Logo



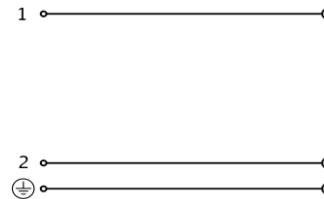
Gasket

Material	NBR, black
Type	profile

Fastening screw

① Material	steel 4.8, coated with zinc-nickel
Size	M2,5 x 27,0 mm (with cross recess)
Tightening torque	0,4 ± 0,1 Nm
Sealing washer	n/a

Circuit diagram



Circuit

Circuit	n/a
Color of LED	n/a
Protecting element	n/a
Voltage	0 - 250 V +15%
Current type	AC / DC
Operating current	max. 6 A
Protecting against wrong polarity	yes


General properties

Ambient temperature range	-25°C ... +90°C
RoHS	yes
CSA approval	n/a
Protection grade (IEC 60529) *	IP65

Packaging

100 pcs packaging. Terminal block and housing are packed in pre-assembled condition. Cable gland componets are pre-assembled in housing. Fastening screw is inserted in the packet in packaged condition. Profile gasket is inserted into the packet in packaged condition.

* Must be tested in properly mounted state on the counterpart.

				Zulässige Abweichung für Maße ohne Toleranzangabe Unless otherwise specified tolerances DIN ISO 2768-v	Format/Size: A4	Maßstab/Scale:	Gewicht/Weight:
				Schutzvermerk beachten Observe protection note ISO 16016	Werkstoff: Material:		
					Benennung: Title: Connector field att. C oS		
1	33358	17.09.2025	GJO		Ident. - Nr.: 615-201-0001	Freigabe-Nr.: Approval no.: 27907	Blatt: Sheet: 1
Ind Rev	Änderung-Nr. Change no.	Datum Date	Name By	Ersatz für/Replacement for:			
Geprüft: Checked: SZAKACS_M							
Erstellt: Created: MANGRA							