

# Connector, form B, industrial type

## Housing

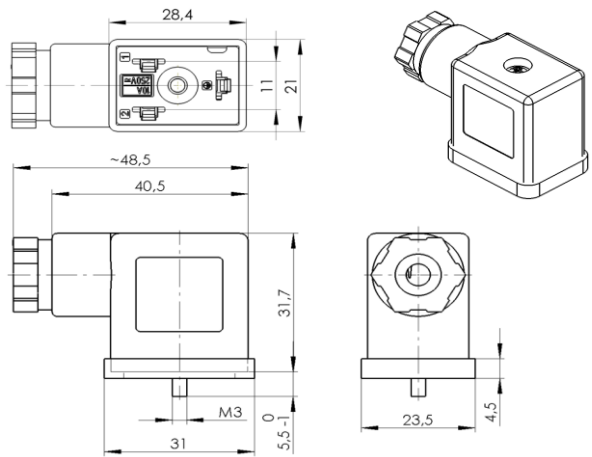
Type	one-piece
Color	black
Material	PA6 GF30
Imprint	n/a

## Cable gland

Thread	M16 x 1,5 mm
Cable diameter	4-6, 6-8 mm
Color	black
Material	PA6 GF30
Tightening torque	1,8 ± 0,2 Nm

## Terminal block

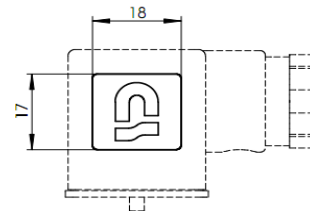
Material	PA6 GF30
Poles	2 + PE
Direction of protecting earth	lockable in 180 degree increments in housing
Contact distance	11 mm



## ② Contacts \*\*

Material	CuZn, tin-plated
Resistance	< 15 mOhm
Conductor cross-section	0,5 - 1,5 mm²
Tightening torque	max. 0,3 Nm

## Logo



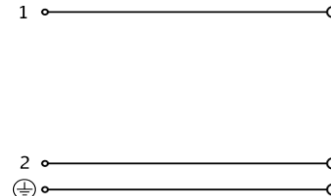
## Gasket

Material	NBR, black
Type	profile

## Fastening screw

② Material	steel 4.8, coated with zinc-nickel
② Size	M3 x 34,0 mm (with cross recess)
Tightening torque	0,4 ± 0,1 Nm
Sealing washer	n/a

## Circuit diagram



## Circuit

Circuit	n/a
Color of LED	n/a
Protecting element	n/a
Voltage	0 - 250 V +15%
Current type	AC / DC
Operating current	max. 10 A
Protecting against wrong polarity	yes

## General properties

Ambient temperature range	-25°C ... +90°C
RoHS	yes
CSA approval	n/a
Protection grade (IEC 60529) *	IP65

## Packaging

Single packaging. Terminal block and housing are packed as bulk material. Cable gland components are packed loose. Fastening screw is inserted into the plastic bag. Profile gasket is inserted into the plastic bag. The transparent packaging bag is printed with customer specific informations.

\* Must be tested in properly mounted state on the counterpart.

\*\* In order to establish a suitable electrical connection, the use of ferrules for stranded respectively fine-stranded conductors is mandatory. Be aware that the conductor cross-section affects the maximum current-load capacity.

				Zulässige Abweichung für Maße ohne Toleranzangabe Unless otherwise specified tolerances DIN ISO 2768-v	Format/Size: A4	Maßstab/Scale:	Gewicht/Weight:
				Schutzvermerk beachten Observe protection note ISO 16016	Werkstoff: Material:	Benennung: Title:	
2	31633	29.09.2022	BKI			Connector field att. I oS	
1	31379	11.04.2022	GJO				
Ind Rev	Änderung-Nr. Change no.	Datum Date	Name By		Ident. - Nr.:	Freigabe-Nr.: Approval no.:	Blatt: Sheet:
Geprüft: Checked:	29.09.2022 JONAS				612-201-0424	24262	1
Erstellt: Created:	07.09.2012 MANGRA				Ersatz für/Replacement for:		

